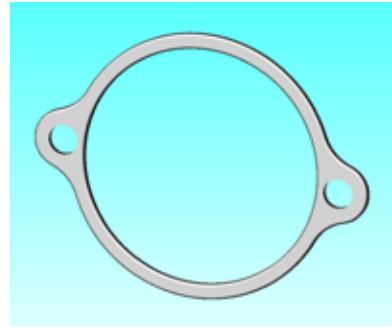
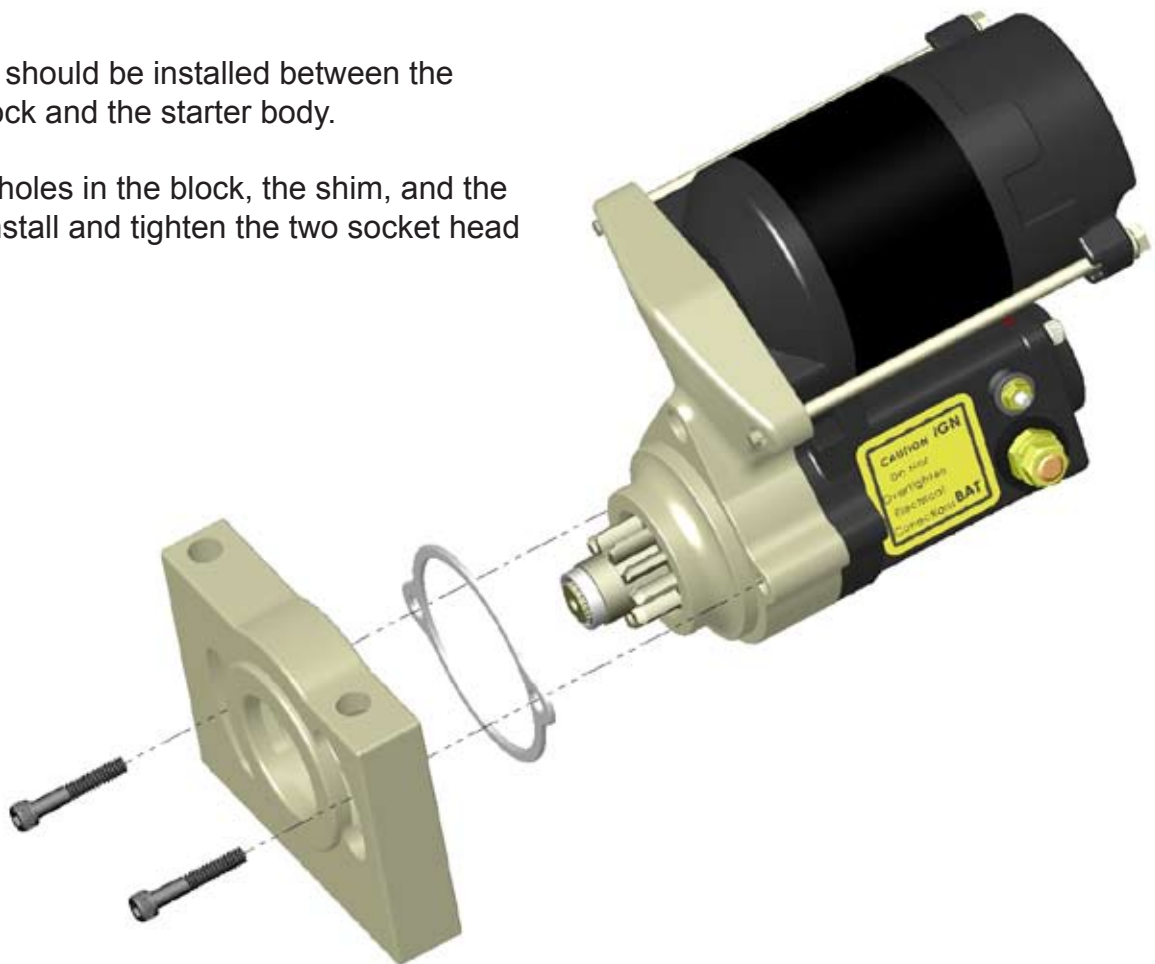


After the starter has been installed, there should be 1/16" (0.062) minimum between the engine side of the ring gear and the front edge of the teeth on the starter pinion gear. Check this distance with the ring gear in at least three different positions. If the distance is too little, a shim can be installed inside the starter, which will pull the pinion into the starter an additional 0.062". This will result in additional clearance between the pinion and the ring gear.



1. Remove the two socket head bolts that hold the mounting block to the starter-assembly.
2. Carefully remove the mounting block from the starter.
3. The shim should be installed between the mounting block and the starter body.
4. Align the holes in the block, the shim, and the starter. Reinstall and tighten the two socket head bolts.



*Powermaster recommends no more than one internal shim be installed in a starter.